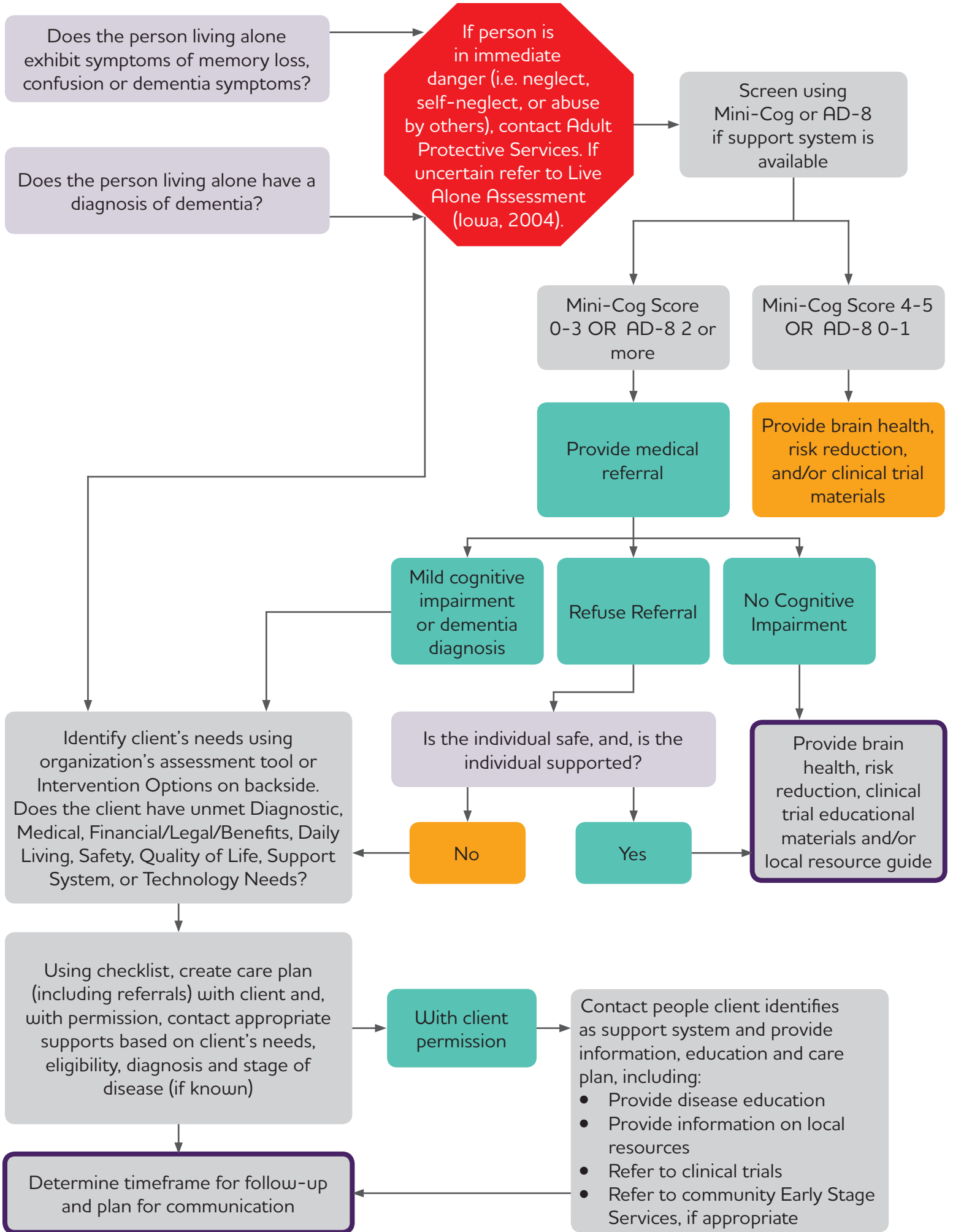


Live Alone Dementia Safety Net Algorithm

The definition of living alone may include individuals who live with another person; however, 1.) the person provides no caregiving support, or 2.) the caregiving support is inadequate.



Note: At any point in the process a client may decline further contact. In these instances, refer to APS as appropriate and per state law.

DIAGNOSTIC REFERRALS FOR POSITIVE SCREEN OR DIAGNOSTIC UNCERTAINTY

Refer to Primary Care Provider (or Specialist as Needed)

- Neurologist
- Neuropsychologist
- Geriatric Psychiatrist
- Geriatrician
- Memory Disorders Clinic

ADDITIONAL MEDICAL NEEDS

- Mental Health Services
- Prescription Insurance and/or Assistance programs
- Vision, Hearing, Dental, Podiatry
- Holistic/Complimentary Medicine
- Trialmatch/clinical trials
- Home Health
- Durable Medical Equipment
- Adult Day Health
- Patient Advocacy and/or translation services

LEGAL, FINANCIAL & BENEFITS

Legal

- Encourage client to assign durable power of attorney and complete healthcare directives and POLST. Refer to legal assistance programs, elder law attorney, public guardian/conservator as needed.

Financial

- Day to day money management
- Refer to fiduciary program
- Refer to Representative Payee Program through Social Security

Benefits

- Social Security/SSDI/SSI
- Veterans Administration (VA)
- Health Insurance – Medicare, Medi-Cal (Medicaid)
- PACE
- IHSS – In-home Supportive Services (Medi-Cal)
- Case Management – MSSP, Linkages, VA, Alzheimer's Association, private
- SNAP – Senior Nutrition Assistance Program

DAILY LIVING & FUNCTIONS

- **Personal Care:** In-home care assistance (Long-term care insurance, VA, In-home Support Services, or private pay)
- **Shopping** – grocery delivery
- **Meals** – Meals on Wheels, congregate meals, private meal delivery
- **Assistive Technology** – Telephone Assistance Programs, Independent Living Centers
- **Chores** – In-home Support Services, private pay, volunteer programs

SAFETY

Note: In situations where client is in immediate danger by self-neglect or by neglect or abuse from others, contact Adult Protective Services.

Driving

- Counsel on risks
- Refer for driving evaluation
- DMV Unsafe Driver Form
- Transportation resources: Paratransit services, private hire, volunteer transportation programs
- Taxi vouchers/scrip

Medication Management

- Oversight by a health care professional.
- Automated/electronic Medi-set
- Pharmacy blister or bubble pack

Wandering

- Medic Alert+Safe Return, Found, or Project Lifesaver
- GPS tracking systems

Home Safety

- Home safety evaluation
- Home modification program
- Equipment loan programs
- Stove safety
- Personal Emergency Response Systems
- Activity monitoring systems

QUALITY OF LIFE & ACTIVITIES

- Community Early Stage Programs and educational material
- Senior Centers (incl virtual programs)
- Adult day services
- Friendly visitor, companion, telephone reassurance programs
- Culturally appropriate resources
- LGBT resources

CARE CIRCLE DEVELOPMENT & SUPPORT SYSTEM

Identify support (incl: family, friends, neighbors, Religious/Spiritual organizations, Community groups/affiliations, fraternal organizations, social service agencies, cultural organizations, LGBT organizations)

- Obtain consent to contact on behalf of client
- Contact identified individuals
- Convene care circle/support system meeting
- Provide education and referrals

TECHNOLOGY (ALSO SEE CARE CIRCLE RESOURCE GUIDE)

- Activity tracking & home automation
- Wandering
- Medication management
- Activities of daily living support



Adapted from ACT on Alzheimer's® developed tools and resources. ACT on Alzheimer's® tools and resources cannot be sold in their original or modified/adapted form.